

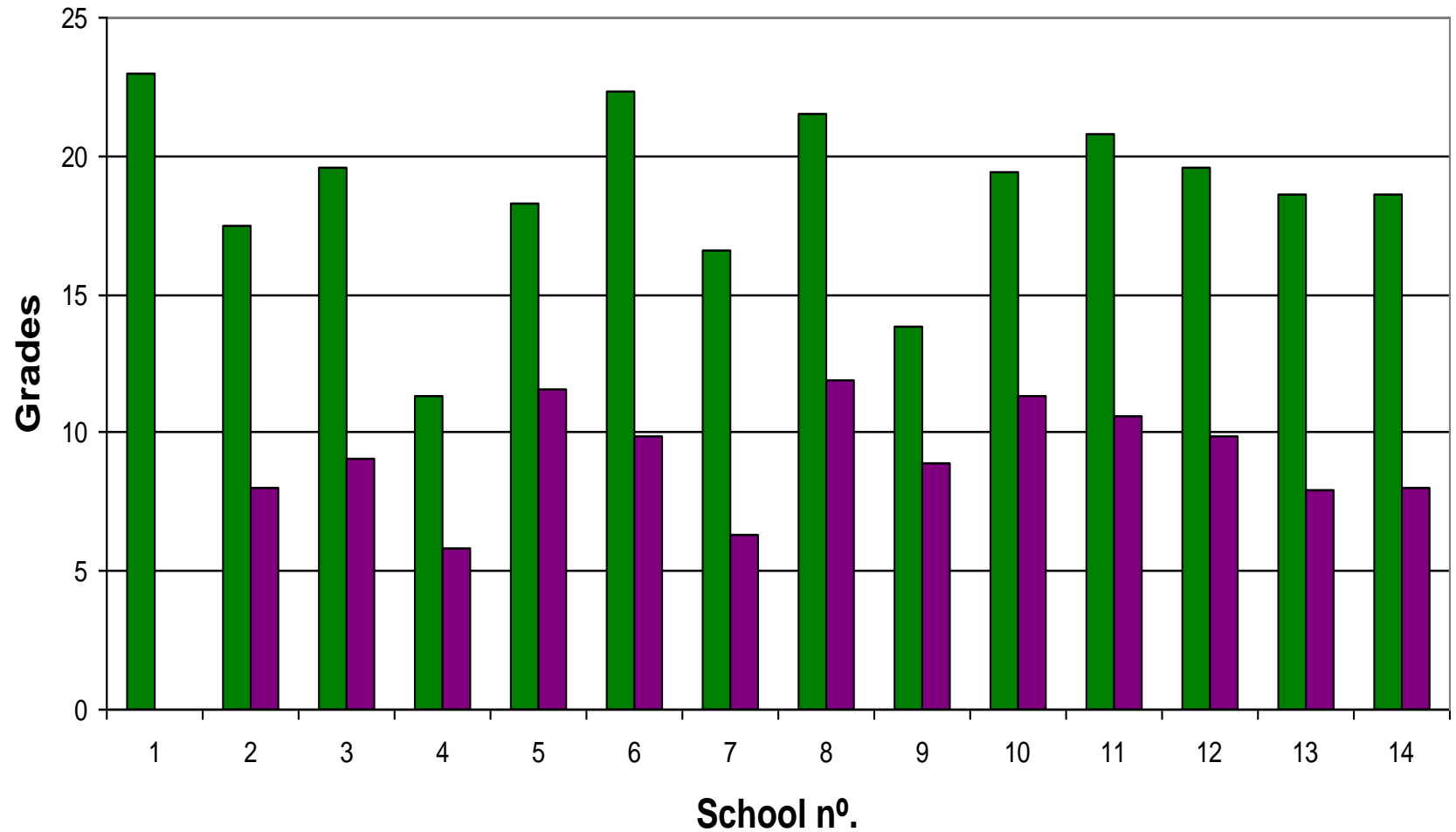
On the Emergence of L2 Oracy in Bilingual Education: a Comparative Analysis of CLIL and Mainstream Learner Talk

Pat Moore 2009

Data-gathering



Speaking Results (/25)



Quantitative Analysis

- **Tokens & Types**
- **Contributions**
- **Turns**
- **Pauses**

Qualitative Analysis

Interaction

- **Turn-taking**
 - i) typology of collaborative turns
 - ii) IRF
- **Intersubjectivity**
 - Checking, Latching, Pre-empting
- **Patterns of Interaction**
 - Parallel, Asymmetric, Collaborative

Flow

- **Automaticity**
 - Discourse markers
 - Cohesion & coherence
- **Bi-directionality**
 - Adjacency pairs
 - Backchannelling

Repair

- **Repair paradigms**
 - Self & Other
 - Collaborative
- **Form & Meaning**

Cognitive Complexity

- **Subjectivity/Objectivity**
- **Causality**
- **Expansion & Exemplification**
- **Speculation & Hypothesising**
- **Joking**
- **Academic Lexis**

technology	tools; battery; ferrous; metals; models; plastics
music	trombone; flute; recorder; guitar; violin; piano; instrument; triangle; notes
history	battles; Romans; Greeks; Byzantines; Germanic kingdoms; Frankish; ancient; tribes; Carolingian; empires; Middle Ages; medieval; castle; conquest
geography	population studies; sectors of industry; contaminant; fuel; energy; private transport; United Kingdom; energy; capital city; map; recycling; plants; river; climate
maths	equations; fractions; calculations; quarter
science	atoms, molecules, protons, neutrons, matter; status; planets; solar system; experiments; solar panels; windmills; geo-thermal power; heat
sport	wrestling; kick; punch; motorcycling; scuba diving; hiking; goal; team; match; game
art	technical drawing; painting; perspective; black and white (in Spanish <i>blanco y negro</i>)

Bilinguality

- **Qualitative differences**
- **Alternation - Strategy or Recourse?**
- **Bilingual norms**

Conclusions

- **Emerging bilingual persona**
- **Considerable L2 gains**
- **Content, cognition & culture**
- **Actors in a plurilingual society**
- **Conversationalists**